



Ethiopian Wolf
Conservation Programme
PO Box 215
Robe
Ethiopia
ewcp@zoo.ox.ac.uk
www.ethiopianwolf.org



A busy 12 months has seen EWCP sign a new MoU with Oromia and WCA, gain momentum in Arsi, celebrate 10 years of Wolf Days in Bale and expand its veterinary team. Programme performance measures indicate that Bale wolves are doing well and rabies immunity rates in domestic dogs increasing with our expanded veterinary work.

Annual Report

May 2008

Dr. Graham Hemson, EWCP
Field Coordinator

Contents

Introduction	3
Capacity Building	4
Monitoring	8
Disease Control & Prevention	16
Education & Outreach	18
Research	19
Project Administration	20
Project Partners and Personnel	21



Introduction

The Ethiopian wolf (*Canis simensis*) is found only in a handful of mountain enclaves in Ethiopia. With less than 500 adult wolves remaining, the species is considered one of the rarest carnivores in the world and listed as Endangered by the IUCN.



© A.L. Harrington

EWCP has been working for the conservation of wolves and the Afroalpine habitat since 1995.

The Ethiopian wolf is the most well known of Ethiopia's endemic wildlife and has featured in many documentaries that have aired all over the world. Along with the Gelada, Wallia Ibex and Mountain Nyala its future is tied to that of the Afroalpine and linked with development plans for the highlands.

The wolves are unique among canids for specialising on rodents and living in stable social groups. Their breeding system is unusual with males remaining in natal territories and females dispersing. While globally rare and endangered the Ethiopian wolf occurs at high densities in suitable habitat and viewing them is therefore easy in places such as Sanetti and the Web Valley.

Breeding begins in August in Bale with pups born between October and December. Pup mortality is relatively low with most deaths occurring between 6 months and one year as pups become more independent.

Wolves are threatened both by processes that threaten the entire Afroalpine and specific to the species.

Expansions to agriculture and livestock grazing that convert and modify the Afroalpine continue to be the looming long term threat to the persistence of wolves.

Immediately wolf populations are threatened by disease outbreaks, particularly rabies. Domestic dogs accompanying people and livestock into the Afroalpine bring with them the risk of disease and a significant reservoir of hosts in which to maintain epidemics.

While hybridisation has been rare in recent years it is noted that outbreaks of hybridisation can and do occur and their effects on wolf populations remain a concern.

Persecution is also infrequent in Bale however there are some indications from our new monitoring programme in Arsi that other wolf populations may be subjected to greater levels of ill will from local communities than others.

Capacity building of Ethiopian Institutions and People

Objective: To increase the capacity of Ethiopia in the field of ecology, biodiversity conservation and protected area management.

Employment and Staff Training

EWCP employs 34 permanent staff and more than 10 temporary staff. Our monthly wage bill is 30,000ETB injected directly into the local economies of Dinsho, Goba, Assela and Bekoji.

- Wildlife Management Degrees

Two EWCP staff are currently being sponsored through the wildlife management degree at Wondo Genet Forestry School. Leta Edea is in his third year and Dejene Dame has just begun his course. Their costs are covered by EWCP.

The program is designed for working adults and runs over four or five summers (with some correspondence courses during the year).

In 2006 Woldemedhin Zebene completed his BSc at Wondo Genet College, funded by EWCP. He is now a senior member of staff in North Ethiopia FZS project.

- Sidney Byers Scholarship

Zegeye Kibret has led the EWCP Education Campaign in the Bale Mountains for the last 10 years. As part of a capacity-building drive aimed to improve the delivery of the EWCP's mission some of its senior staff are visiting other projects to broaden their experience and inspire their work in Ethiopia. Zegeye received one of the first Sidney Byers Scholarships awarded by the Wildlife Conservation Network.

"The Sidney Byers scholarship is the best opportunity I have had to broaden my experience. It has motivated me that my dream of people and wildlife harmonious coexistence would come true."



Zegeye presenting in Umfolozi

Zegeye visited Lilongwe wildlife centre in Malawi, Shamwari Education Centre and Umfolozi Wild Dog Project in South Africa. In the second phase of the programme Zegeye visited the Wolf Trust, Centre for Alternative Technology and Born Free offices in the UK and the Large Carnivore Initiative in Bulgaria.

- Edriss' Training Trip to Kenya

In October 2007 Edriss Ebu, Programme Manager for EWCP in Oromia visited Born Free projects in Kenya. The aim was for Edriss to be exposed to a diversity of management approaches to build confidence in his own ability as a manager and to inform of different approaches to management in conservation. Edriss spent time with a de-snaring project, on bushmeat surveys, outreach in towns and villages and visited major national parks (the first time he had seen elephants and lions). He had an enriching and enjoyable stay in Kenya and returned inspired and invigorated.

- Support for Federal and Regional Wildlife Authorities

We have started discussing our role as a capacity building organisation with the WCA and OBARD. This year we hope to sponsor an ecologist from BMNP through a MSC research study and we await to hear whether he has passed his entrance exam.

We are also considering the viability of sponsoring a WCA scout through a veterinary degree at Debre Zeit University.

Partnerships with International, National and Local Institutions

We currently maintain strong links with several institutions in Europe including Oxford, Edinburgh and Glasgow Universities. In Ethiopia we collaborate with all levels of government from Federal to Kebele with Natural Resource Management, Agriculture, Wildlife, Education

and Tourism. We work with Addis Ababa University to support MSc students and collaborate closely with the Frankfurt Zoological Society Afroalpine and Bale Mountains projects and the FARM/SOS Sahel Bale Eco-Region Sustainable Management Project. Each of these projects share a common vision of sustainably managed natural resources in the Ethiopian highlands and of core areas of wilderness which regulate freshwater flows, support vital biodiversity and provide sustainable livelihoods.

Student Training

- 2 MSc's sponsored through Addis Ababa University

Addisu Mekonnen Kassie is studying the distribution and habitat preferences of the Bale monkey in Odoboulu, just North of Bale. The project is supervised by Prof. Afework Bekele (Addis Ababa University) and Dr Graham Hemson (WildCRU, Oxford University and EWCP). EWCP provides Addisu with US\$2000 funding from which he has leveraged a further \$2000 from the Primate Conservation Inc and \$2000 from Pittsburgh Zoo.

Mohammed Kasso is studying rodent distribution in the Arsi Mountains to start gathering key ecological data from the second largest wolf habitat. The project is supervised by Prof. Afework Bekele (Addis Ababa University) and Dr Graham Hemson (WildCRU, Oxford University and EWCP). EWCP provides Addisu with US\$2000 funding.

EWCP also sponsored Tariku Mohammed and Mohammed Yaba to complete Masters Degrees from the University of Addis Ababa in 2006/7. Both students came from the Oromia region where we operate and we hope they will build the capacity for wildlife research and management in the region.

Tariku Mohammed studied Starck's hare, a little known Ethiopian endemic that is common in the Bale Mountains. Mohammed Yaba looked at the diet of the giant molerat (*Tachyoryctes macrocephalus*) which is restricted to the Afroalpine grasslands of the Bale Mountains. Both species are important prey for Ethiopian wolves, and knowledge of the herbivore community is important for understanding the population biology of wolves.

We are now discussing candidates and topics for the masters studies in 2008/2009 and it is hoped that we can sponsor one of the park experts through an MSc.

Infrastructure

- Completion of Dinsho Ethiopian Wolf Sports Centre

In February 2008 the Dinsho Wolf Sports Centre was completed and used for the first time for the tenth anniversary "Wolf Day". EWCP has agreed to maintain the building for the first 5 years and it will be used by local communities for meetings, sports events, sports training and environmental education. The building has two changing rooms and showers, an office, a kitchen and a large meeting room and was built with generous donations from Mr Peter Diethelm.



Ethiopian Wolf Sports Centre and Bale Wolf Day 2008

- Contribution to maintenance of Dinsho Lodge

In October 2007, EWCP contributed 6000ETB to essential maintenance work on the tourist lodge near the Bale Mountains National Park HQ. The work refitted the toilets and showers. Unfortunately poor management by park staff responsible for the facilities has led to rapid deterioration of the refurbished facilities.

- Maintenance of Sodota Road

EWCP has been responsible for the creation of the only vehicular access to the park other than the roads in Gaysay and the main road linking Goba and Dola Mena. One key road is the access from Dinsho to EWCP's Sodota Camp. The road is used by park vehicles, tourists, FZS and EWCP as well as local cattle and horse traffic. This heavy use has resulted in rapid deterioration during the wet season requiring 4000ETB of local community labour to repair the road. In future the possibility exists of upgrading and repairing the roads linking Morebawa and Sanetti to Sodota created 15 years ago.

Monitoring Wolf Populations, Habitats and Human Activities

Objective: Monitor and assess wolf demographic trends with a focus on Bale and other selected critical populations, measuring levels of livestock (dogs and grazing stock), persecution and habitat loss affecting wolf status.

Wolf Monitoring in Bale and Other Populations



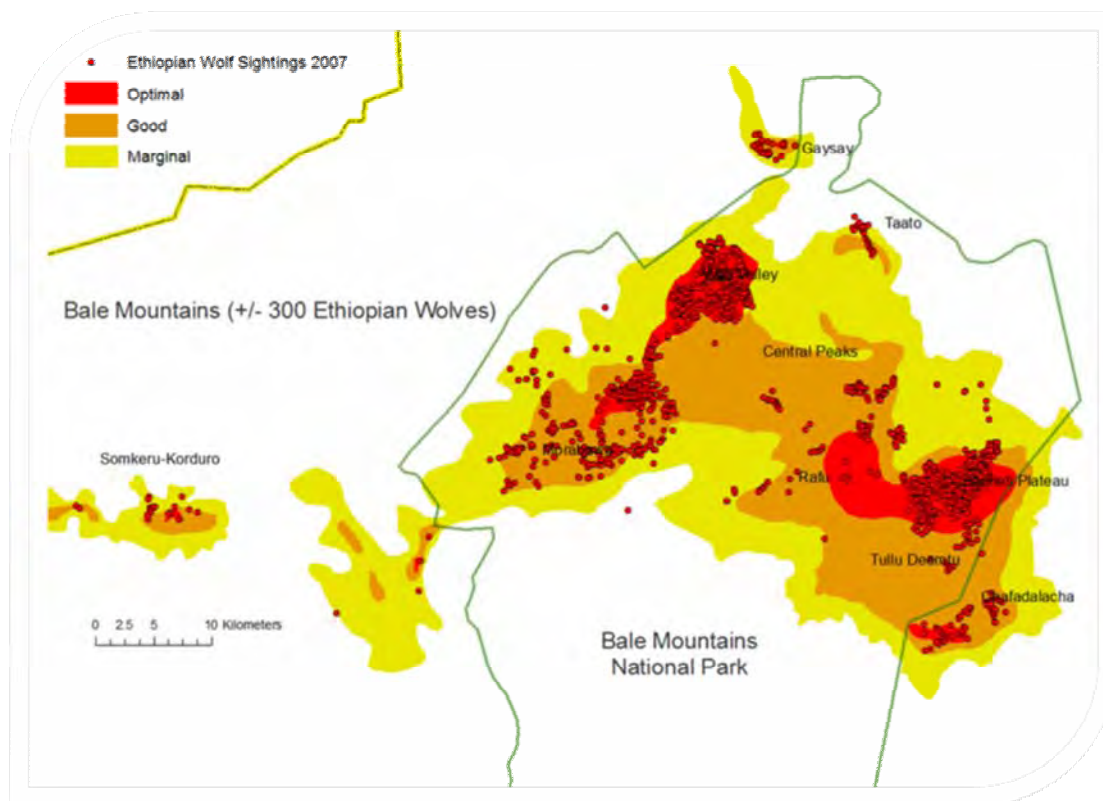
Pups and dominant female from Meggity pack

- Population estimates

As a result of over 1000 man/days in 2007 we have established a reasonably robust estimate for wolf numbers in Bale including Somkero-Korduro (in which we are getting better information each year). Our monitoring team estimates that approximately 300 adult and sub-adult wolves exist in 59 packs in Bale. Many of these are concentrated in key habitat in the Web Valley, Central Sanetti and Morebawa where the habitat is of optimal quality. The Web Valley population continues to recover from the rabies outbreak of 2003/2004 and the adult/sub-adult population has increased from 45 to 60 this year. A more detailed breakdown follows below.

The EWCP population status report from the Bale mountains consists of very detailed data from 18 focal packs in three core areas. These areas are:

1. THE WEB VALLEY
2. CENTRAL SANETTI PLATEAU
3. EAST MOREBAWA



Wolf Sightings in Bale 2007

In 2007 the EWCP monitoring team also gathered data on a further 39 wolf packs in Bale from the Somkeru-Korduro region South of Dodola 15-33 km West of the Bale Mountains National Park (BMNP) to the Chafadalacha region of the Sanetti Plateau, just East of the BMNP. As we are most confident of data from the focal packs most subsequent analysis of trends and ecological patterns is drawn from these data.

Focal Packs

Central Sanetti Focal Packs

1. BBC- 3 AM, 1 AF, 2 SAM, 1 SAF, and 3 pups. Birth date 14th October emerged date 5th November 2007
2. Badagassa - 2 AM, 1 AF 1 SAM, no pups this year.
3. Nyala – 2 AM, 2 AF and 4 pups. Birth date of the pups 27th October emerged date 18th November 2007
4. Garba Guracha – 1 AM, 1 AF, 2 SAM , 1 SAF and 6 pups. Birth date 2th November emerged date 23rd November 2007
5. Batu – 2 AM, 1 AF. No pups for past two years.
6. Quarry – 4 AM, 1 AF, 1 SAF and 3 pups. Birth date 26th October 2007 emerged date 17th November 2007

Table 1: Population of Sanetti Focal Packs 2006 and 2007 breeding seasons

Year	Total A/SA	AM	AF	A?	SAM	SAF	SA?	Surviving Litters	# Pups
2006	24	10	8	-	3	3	-	3	10
2007	29	14	7	-	5	3	-	4	16

The 2007 breeding season has been reasonably successful in Sanetti and the population has regained numbers since the suspected Canine Distemper outbreak.

- Sanetti packs averaged 5 adults and sub-adults with the largest pack contained 7 and the smallest 3.
- Sanetti packs produced an average of 4 pups surviving to 3 months age, 6 being the maximum and 0 being the minimum.

The sub-population of Ethiopian Wolves found on Sanetti Plateau suffered from a canine distemper outbreak early in early 2006. At the end of 2006, the mean pack size (adults and sub-adults) was 4 wolves, with an average of 2 puppies born per pack (3 of 6 packs produced puppies). 4

Web Valley Focal Packs

1. Sodota - 3 AM, 1 AF and 3 pups .
 - New Sodota (newly split from Sodota) 1 AM, 1 AF
2. Meggity – 6 AM, 2 AF, 3 SAM, 2 SAF and 5 pups . Birth date 8th November emerged date 29th November
3. Kotera -2 A M, 1 AF no pups since 2006
4. Bulamo/Mulamu – 2 AM, 2 AF, 1 SAF. (2 immigrated from Darkina) Birth date 1st December 2007, lost all pups before emergence.
5. Darkina – 2 AM, 1 AF, 3 SAM, 1 SAF, 1 SA?, 2 A? no pups seen
6. Alandu – 4 AM, 2 AF, 1 SAM 1 SA? and 2 pups . Birth date of the pups 25th November emerged date 16th December 2007

Table 2: Population of Web Valley Focal Packs 2006 and 2007 Breeding Season

Year	Total A/SA	AM	AF	A?	SAM	SAF	SA?	Surviving Litters	# Pups
2006	35-36	16-17	9	1	4	5	-	4	18
2007	45	20	10	2	7	4	2	3	10

The 2007 breeding season has been partially successful in Web. The rabies outbreak reduced the population from 90 to 20 in 2004 and the sub-population has shown considerable resilience in recovering so well. However only half of Web packs produced emergent pups this year suggesting the rate of recovery may be declining. We cannot be sure but it may be that the expansion of agriculture and continued increase in livestock numbers in the area may be

reducing the capacity of the area to support wolves and the population may never recover to pre-rabies numbers.

- Web packs averaged 8 adults and sub-adults with the largest pack containing 15 and the smallest 2.
- Web packs produced an average of 2 pups surviving to 3 months age, 5 being the maximum and 0 being the minimum.

In 2006, the mean pack size (adults and sub-adults) was 7 wolves, with an average of 3 puppies born per pack (5 of 7 packs produced puppies).

East Morebawa Focal Packs

1. Fotora – 2 AM, 1 AF, 1 SAF and 3 pups. Birth date of the pups 8th November emerged 29th November 2007
2. Osole – 2 AM, 1 AF, 2 SAM, 2 SAF and 3 pups. Birth date of the pups 8th November and emerged date 29th November 2007
3. Fulbana – 4 AM, 1 AF and 4 pups. Birth date of the pups. Birth date 17th December and emerged on 8th January 2008
4. Weshama – 2 AM, 2 AF, 2 SAM, 1 SAF and 4 pups. Birth date 07th November 2007 emerged date 28th November 2007
5. Ganale – 2 AM, 1 AF, 2 SAM, 1 SAF, 1 SA? and 3 pups. Birth date of the pups 17th November emerged date 4th December 2007
6. Huke – 3 AM, 1 AF, 1 SA? and 6 pups. Birth date of the pups 14th December emerged date 7th January 2008

Table 3: Population of E. Morebawa Ethiopian Wolf Focal Packs Breeding Season 2006 and 2007

Year	Total A/SA	AM	AF	A?	SAM	SAF	SA?	Surviving Litters	# Pups
2006	31	8	9	1	5	6	2	5	21
2007	37	15	7	-	6	5	2	6	23

The 2007 breeding season has been successful in Morebawa with all focal packs successfully breeding and producing emergent pups. While we do not know the size of the East Morebawa sub population before the rabies outbreak of 2003, it seems likely that this population must be approaching the pre rabies numbers.

- East Morebawa packs averaged 76 adults and sub-adults with the largest pack containing 7 and the smallest 4.
- East Morebawa packs produced an average of 4 pups surviving to 3 months age, 6 being the maximum and 3 being the minimum.

Focal Pack Summary

Table 4: Summary of Focal Packs Breeding Season 2006 and 2007

Year	Total A/SA	AM	AF	A?	SAM	SAF	SA?	Surviving Litters	# Pups
2006	90-91	34-35	26	2	12	14	2	12	49
2007	111	49	24	2	20	12	4	13	49

In 2006 average pack size for the focal areas was 5 rising to 6 in 2007 as the population size increased after the Web rabies and Sanetti canine distemper outbreaks. 70% of packs raised pups to emergence from the den and pup production remains high. The overall trend gives an indication that the entire Bale population is healthy although there is perhaps an indication that the population limit in Web is already being approached despite being at 84% of the estimated population size pre-rabies. This may indicate that habitat is being lost to agriculture and grazing despite some previous research being unable to link these factors to limited wolf numbers (Marino, Sillero Zubiri et al. 2006).

Peripheral Packs

These packs receive little attention during the breeding season and as such few data on pup survival currently exists. They are less likely to be accurate and are included as an indicator of the size and structure of the entire Bale population.

Web Peripheral Packs

1. Tarura – 7 AM 2 AF 3 SAM 2 SAF 1 SA? and 4 pups. Born 7th November 2007 emerged date 28th November 2007

Central Sanetti Peripheral packs

2. Dumai (split from Badagassa in March 2008). 1 AM, 1 AF and 3 pups born November 2007.
3. Sulula – 1 AM , 1 AF
4. Balsa – 2 AM, 1 AF, 1 A?, 3 SA?
5. Lencha – 1 AM, 1 AF and 3 pups, Birth date of the pups 29th October 2007 and emerged 20th November 2007

West Morebawa

6. Gurati – 4 AM, 2 AF, 3 SA? and 6 born 5th December emerging on 26-27th December
7. Duna – 3 AM, 1 AF, 2 SA?
8. Horabache – 4 AM, 3 AF 2 SA? and 3 pups Born 2-3rd December emerged 23-24th December.
9. Waotta - 4 AM, 2 AF, 1 SA? and 3 pups estimation pups birth date 3-4th December emerged 27- 28th December 2007.
10. Leliso – 3 AM, 1 AF, 2 SA? and 3 pups born 6 -7th December emerging 27 – 28th December 2007.

-
11. Ariye – 3 AM, 2 AF, 2 SA? and 4 pups born 6-7th Dec emerging 27 – 28th December 2007
 12. Kunbuta – 3 AM 3 AF
 13. Chokisa – 2 AM 1 AF 2 SA?
 14. Rogicha – 2 AM, 2 AF, 3 SA? and 4 pups born 8-9th December emerging 29-30th December 2007
 15. Bura - 3 AM, 1 AF, 1 A? and 1 pup born 7 -8th December emerging 28 -29th December 2007

West Sanetti

16. Rafu – 2 AM 1 AF
17. Chufo -1 AM 2 AF 1 A?
18. Deema – 1 A?
19. Buyamo – 2 AM 1 AF
20. Lakota – 1 AM 1 AF 1 SAM

East Sanetti

21. Shiwa - 2AM 1 AF 1 A?
22. Konte – 2AM 1 AF 1 A? 3 SA?
23. Badesa – 2AM 1 AF
24. Abala - 1 AM 1 AF
25. Agicho - 1 AM 1 AF 3 SA?
26. Shefa – 1 AM 1 AF 1 SA?
27. Likimsa Not monitored in 2007

Central Peaks

28. Saldhit – 2 AM 1 AF 1 SAM 1 SAF
29. Shaya – 2 AM 1 AF
30. Kurumsa – 4 AM 2 AF 2 SAM 1 SAF
31. Worgona – 1 AM 1 AF
32. Wassama – 1 AF 1 A?
33. Tato – 3 AM 1 AF 1 SAM
34. Gayasay – 4 AM 2 AF

Somkaro (South of Dodola)

35. Chafa Dalacha - 1 AF
36. Tulu Kora – 3 AM 1 AF 1 SAF 1 SAM 3 SA?
37. Somkaro – 2 AM 1 AF 1 SAF 1 SA?

Kara Ushe (South of Adaba)

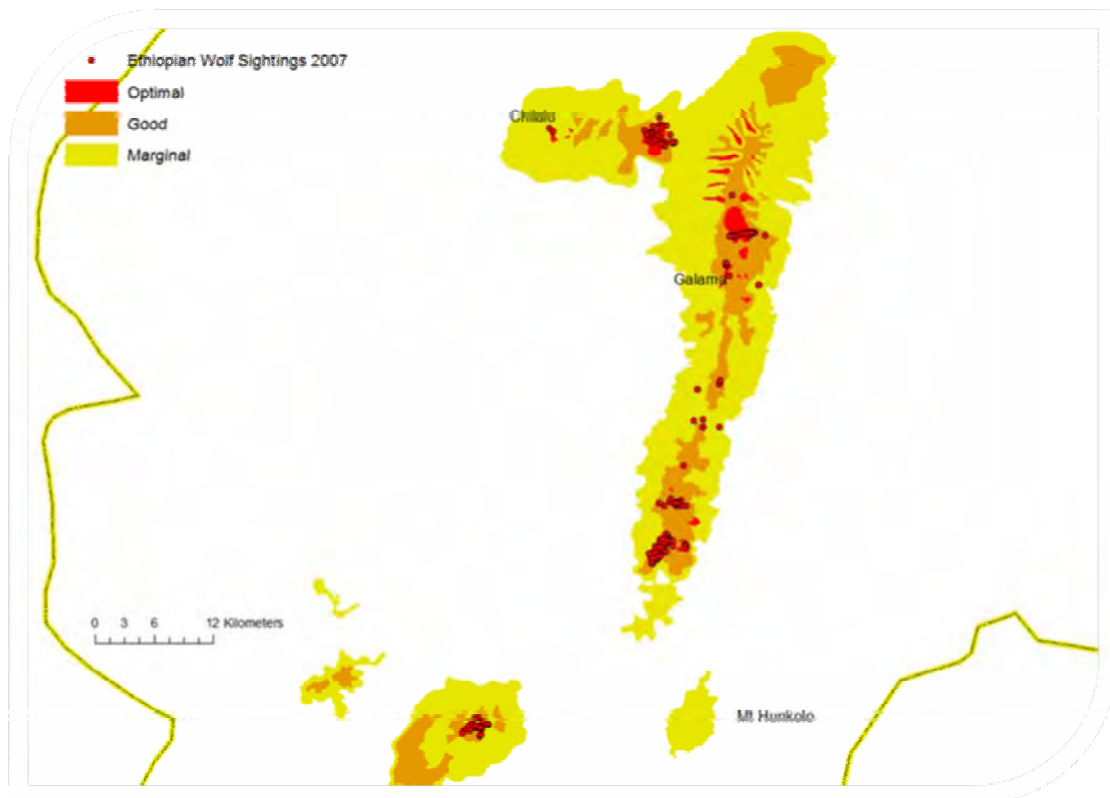
38. Gigiya – 1 AM 1 A?
39. Kaka – 1 AM 1 AF 1 A?
40. Baranda – 2 AM 1 AF
41. Tuticha – 1 AF 1 SA?

Table 5. Results of Bale census efforts in Bale 2007/2008

NB THE RESULTS SHOULD BE VIEWED AS ESTIMATES RATHER THAN 100% ACCURATE TOTAL COUNTS

Type	Total A/SA	AM	AF	A?	SAM	SAF	SA?
Focal	111	49	24	2	20	12	4
Periph	189	84	49	8	9	6	33
TOTAL	300	133	73	10	29	18	37

We have much less sampling effort in Arsi so our estimate must be viewed as weaker. Our 2007 surveys suggest that 41 adult/sub-adult wolves in 9 packs remain in Arsi. This is only half of what we expected from remote sensed data and a cause for some concern. Part of this may be explained by the habitat which is dominated by scrubby vegetation and in which it is harder to observe wolves. However it does appear that the Afroalpine in Arsi may be receding in the face of agriculture and livestock pressure at a faster rate than Bale.



Wolf sightings in Arsi 2007

Disease Monitoring

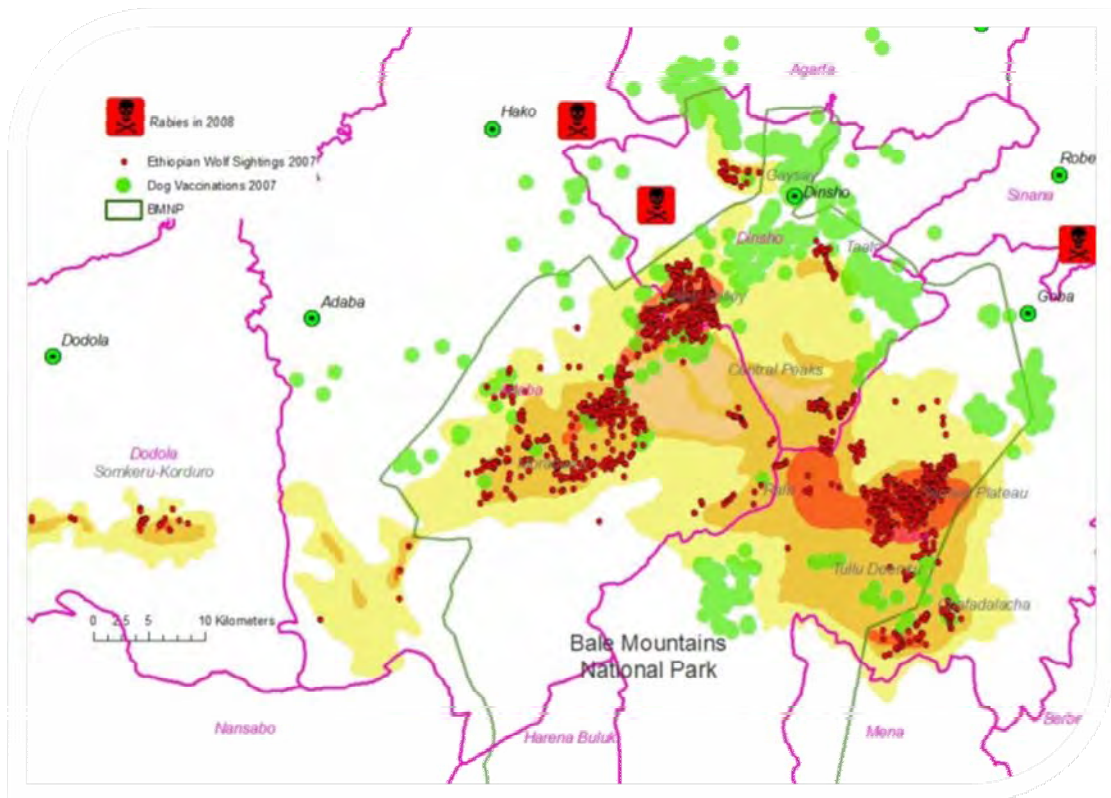
There have been two rabies outbreaks in Bale this year.

The first was reported by Goba Zone and was outside the area covered by our dog vaccinations. Nevertheless we sent a team to the area to gather data, dispense advice and vaccinate dogs. The outbreak appeared minor and accounted for two dogs and a donkey (despite initial reports of human mortality).

The second report was much closer to wolf range in the Garamba Dima and Hora Soba kebeles and the villages of Garamba Dima and Chofira. At the time of writing data is still coming in but at least 4 dogs appeared to have contracted rabies. A further two were bitten and euthanized at least 5 people, and 2 donkeys were bitten by rabid dogs.

Alarmingly a similar pattern was reported before the rabies outbreak in 2003/4 which decimated the Web Valley sub-population of wolves.

EWCP reacted rapidly and effectively with our vet teams targeting dogs between the affected areas and the Web Valley and monitors combing nearby wolf range for signs in dogs and wolves therein. So far it appears that the outbreak petered out.



Rabies cases, wolf sightings and vaccinations in Bale 2007/2008

Our intervention and follow up surveys indicated crucial gaps in “hidden” communities in the crucial area which the vet teams have taken on and addressed.

Disease Control and Prevention

Objectives: multi-pronged approach to reduce the threat that diseases pose to the survival of the Ethiopian wolf, with the following objectives: i) assess prevalence and threat of canid pathogens to wolves, ii) gathering information in health status, diseases and causes of mortality; iii) investigate a vaccination scheme to protect Ethiopian wolves in Bale; iv) prevent disease transmission from domestic dogs; and v) improve disease monitoring practices in Ethiopia.

Domestic dog inoculations

- Dogs vaccinated

In 2007, 3817 dogs were vaccinated against rabies in and around wolf range in Bale. This is up from 2069 in 2006. Of these 2278 were new to the vaccination records and the remainder had been vaccinated over three years ago. The vaccine remains effective for three years. 568 dogs evaded capture and the team encountered 896 dogs that were still immune from previous vaccinations. We have improved our cold storage chain and have new fridge/freezers in Addis and Bale.

- Second Vet Team

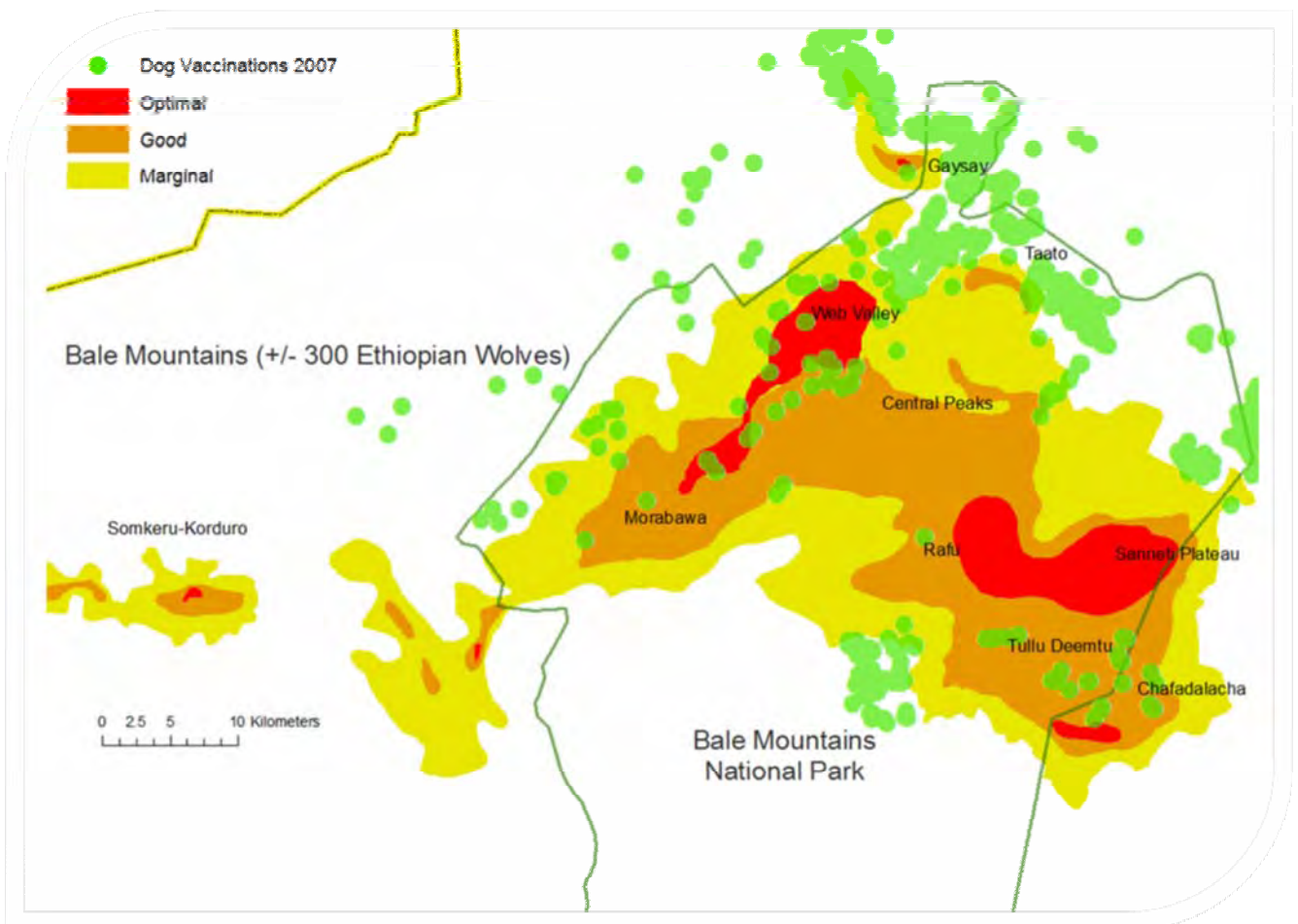
To keep up with growing dog populations in and around the Bale Mountains National Park EWCP has employed and equipped a second veterinary team. The team were all drawn from the local, Dinsho community and we hope that we will hit 7000 dogs vaccinated in 2008.



Leta Edea getting to grips with a dog in Dinsho

- Assistance to Goba Woreda

In late 2007 EWCP was contacted by the department of Agriculture in Goba. They had reports of rabies 20 km North of Goba. We immediately despatched a team to the area and gathered data on rabies mortality (donkeys, cattle and dogs) and vaccinated dogs. We also provided information on rabies control and reassured community members.



Vaccination locations 2007

- Meeting with Bale Zone Vets

We have begun to discuss opportunities for collaboration with Zone's veterinary department. In the future we look forward to a more holistic approach to rabies control in Bale and being able to share resources and information with Zone vets.

- Meeting with Dinsho Woreda

After the rabies outbreak of March 2008, EWCP capitalised on public concern and hosted a meeting in Dinsho. There were 25 participants who came from the local community, representatives from development agencies, zone natural resource, Woreda administration and

natural resource representatives, Bale Mountains National Park, EWCP, FZS and kebele chairmen. Participants agreed to look at controlling immigration of seasonal herders, free roaming dogs and enforcing dog vaccination inside wolf range.

Critically kebele representatives brought up the marked decline in rabies cases since EWCP's intervention and reminded the assembly of the dire humanitarian and economic consequences of becoming complacent about disease control.

Education and Outreach

Objective: The EWCP education campaign seeks to involve local communities in the protection of Afroalpine natural resources; continue with the development of a conservation education and extension campaign at school and community levels in Bale and other critical wolf areas.

- EWCP Arsi workshop

On 5th February 2008 we implemented a workshop on wolf conservation in Assella. The workshop targeted kebele leader from the West of the Galama range and included zonal natural resource, tourism and education staff. The workshop introduced the status and ecology of the Ethiopian wolf to the audience and expanded into the activities of EWCP in Bale and Arsi. The second part of the workshop asked attendees to discuss the conservation of the Afroalpine and wolf populations and to propose their own solutions. There was remarkable conformity of proposed approaches and we are currently compiling the proceedings of the workshop to send to attendees.



Attendees of the Arsi wolf workshop, February 2008

A second workshop is planned for late 2008/early 2009 which will seek to engage representatives from the East of the Galama range.

- Education Programme

In 2007 the education programme in Bale was interrupted by Zegeye's capacity building trips. However Zegeye activities still reached more than 10,000 people including scouts, guides, school children, teachers, students and environment club members.

In Arsi Dejene Dame has developed Environment Clubs in 8 schools around wolf range and we dispensed 2000 birr funds for the implementation small projects in each club.

- 10th Anniversary Bale wolf day

On 17th February 2008 EWCP hosted the 10th anniversary "Wolf Day" at the Ethiopian Wolf Sports Centre in Dinsho. The event is a celebration of Afroalpine natural resources and a chance for EWCP to repay some of the community's goodwill towards the programme. This year we organised running races, school and club football tournaments, volleyball and other fun events. Money was raised for the Bale Beauty Nature Club and many lessons learned for future events. The day also marked the opening of the Ethiopian Wolf Sports Centre which will become the site for all future Bale Wolf Days.

- 1st Arsi Wolf Day

On 23rd April 2008 EWCP ran the first wolf day in Arsi. The wolf day was aimed exclusively at secondary school students in Arsi and was hosted by Bekoji School. Several thousand eager students attended and took part football, volleyball, poetry, quizzes, displays and athletic events. The entire day went off with a hitch and was very very well received by students, teachers and zone education and NRM workers. A very strong foundation has been laid for the Arsi sports and outreach programme and we look forward to bigger and better Arsi wolf day in 2009.

- Agreement to repair clinic vehicle

After discussions with the Dinsho Woreda EWCP has agreed to pay for the repair of the Dinsho clinic vehicle. The vehicle was badly damaged after the driver stole the vehicle when drunk.

- Fire control support

In early 2008, we (with FARM Africa and FZS) agreed to provide financial and vehicular support to Goba and Agarfa woredas to fight fires. We have contributed two vehicle days and 14000ETB and look forward to a more coordinated effort to limit fires and control their spread in 2008/2009

Research

Objective: the EWCP relies on strong science to inform and develop conservation actions towards the completion of its main objective: to assess, address and counteract threats to the survival of Ethiopian wolves and their Afro-alpine ecosystem.

EWCP currently provides support and guidance to two overseas PhD students.

Miss Flavie Vial is studying the effects of livestock on rodent communities and vegetation in Bale. Miss Vial is from the University of Glasgow with co-supervision from Oxford University's WildCRU, EWCP's home. The project has advanced well and sampling grids have been laid out, data collection on livestock distribution and movements is underway and 3 livestock exclosures (fenced areas to keep livestock out to investigate the impacts of livestock on Afroalpine vegetation and rodents) are constructed.

Miss Freya van Kesteren is studying the reproduction and social biology of Ethiopian wolf packs in the Web Valley. Miss van Kesteren is based at Oxford University's WildCRU with additional support from University of Edinburgh. Miss Van Kesteren has completed one season in the field and has gathered important samples for analysis and refined her field and sample storage and analysis techniques.

Dr Jorgelina Marino is currently drafting a proposal to look at the dual roles of climate change and agricultural expansion on the viability of wolf populations in Ethiopia especially the small Northern populations. The proposal is at an early stage and is as yet unfunded.

Mr Addisu Mekonnen is completing his study of Bale monkey distribution and habitat association in Northern Bale and we are hopeful that he will be able to continue his work and model Bale monkey distribution in collaboration with the Darwin Harena Project.

Mr Mohammed Kasso is in the final stages of his masters study of rodent ecology in Arsi. This baseline study should lay a decent foundation for further work in the coming years.

Project administration

- New Programme Coordinator

In April 2007 EWCP bade farewell to Dr James Malcolm and welcomed new Field Coordinator Dr Graham Hemson. Dr Hemson has a doctorate in conservation and ecology from Oxford University and specialises in large carnivores and will run the project until April 2009.

- New MoU

In May 2007 EWCP signed a new *memorandum of understanding* with the Wildlife Conservation Department and the Oromia Bureau of Agriculture and Rural Development. The change from WCD to the new Wildlife Conservation Authority should not affect this operational agreement.

The MoU covers five years and we look forward to closer ties with all signatories.

Partner Organisations

The Ethiopian Wolf Conservation Programme (EWCP), formally established in 1995, operates as a partnership between Oxford University's Wildlife Conservation Research Unit (WildCRU) and Born Free Foundation, which provides an ideal platform from which to address wildlife conservation: WildCRU has been working chiefly on how animal populations tick, and on ways how to ensure their survival, Born Free has traditionally been more concerned with the welfare of individual animals. The EWCP has the auspices of the IUCN/SSC Canid Specialist Group, and collaborates with the Centre for Tropical Veterinary Medicine of Edinburgh University and the Zoological Society of London.

The EWCP operates in Ethiopia under an agreement with the Ethiopian Wildlife Conservation Authority (WCA) at a federal level and with the Agricultural Bureaux of the Council of the Regional State of Oromia and the Amhara National Regional Government at a regional level. EWCP has long established and excellent working relationships with these organisations. In addition, the Programme seeks the support and cooperation of local authorities for all field activities in all areas.

The EWCP is chiefly funded by the Born Free Foundation with generous donations from the Wildlife Conservation Network and grants from Disney Wildlife Conservation Fund. Additional funds have been received in the past from Frankfurt Zoological Society, The Wellcome Trust, Wildlife Conservation Society, the Morris Animal Foundation, National Geographic Society, St. Louis Zoo, the African Wildlife Foundation, John Aspinall Foundation, Ethiopian Wildlife & Natural History Society, the IFMP-GTZ project in Adaba-Dodola, Conservation International, Science Agency and Network (Switzerland), CEPA, the Wolf Conservation Trust – UK, Bern Thies Foundation, the World Society for the Protection of Animals, Fiona McKenzie, a few other organisations and a number of private donors.

Field Team

Field Coordinator	Dog Catcher, Bale x2
WCA Programme Counterpart, Bale	Data Entry Clerk, Bale
Programme Manager, Bale	Museum Keeper & Research Building
Field Officer, North Ethiopia	Cleaner, Dinsho
Education Officer, Bale	Research Building Store Keeper, Dinsho
Education Officer, Arsi	Research Building Guards, Bale x 3
Community Relations Officer, Bale	Research Camp Guards, Bale x 4
Veterinary Officer, Bale x2	Horse Guards, Bale x 2
Field Assistant, Bale x 4	Horse Cleaner, Bale
Field Assistant, Arsi x 1	Sports Centre Guards, Bale x2
Veterinary Assistant, Bale x2	

Advisers

Dr Claudio Sillero	Founder/Director EWCP, WildCRU
Dr Karen Laurenson	Wildlife Epidemiologist, Frankfurt Zoological Society
Dr Zelealem Tefera	Community Conservation, Frankfurt Zoological Society
Dr Fekadu Shiferaw	WCA Veterinary Expert
Prof David Macdonald	Director of WildCRU
Dr Jorgelina Marino	Ecologist, WildCRU
Ms Dada Gottelli	Geneticist, Institute of Zoology London
Mr Will Travers	Born Free Foundation, CEO
Mrs Stacey Iverson	Wildlife Conservation Network, Project Manager