

ETHIOPIAN WOLF CONSERVATION PROGRAMME

Publisher and Editor: Zegeye Kibret, Bale Mountains National Park



The Bale mountains is one of the most important parks in Africa covering an area of 2200 km² and lying b/n an elevation of 1500 to 4377m above sea level. This altitudinal range has divided the park in to three main sub- divisions, the forest belt, the montane grasslands and the afroalpine moorlands. And each animal species is adapted to a particular habitat. The park harbors 78 mammal species and more than 280 bird species. Out of 78 mammals 17 are endemics including the most endangered Ethiopian Wolf. The Ethiopian Wolf Conservation Programme is working to protect the critically endangered Ethiopian wolves and their afroalpine habitat.



Mountain nyala on Dinsho hill (BMNP)

Facts

- The Ethiopian wolf smells hundred times better than humans!
- 64 % of Africa's Afro Alpine is in Bale, which is the wolves best place on earth!
- A single giant lobelia produces 7 million seeds and dies
- 75 % of worlds mountain nyala population is found in BMNP!
- BMNP is a source of 44 springs making vital contributions to all Ethiopia's river between Wabe Shebele and Welmel
- Less than 450 Ethiopian wolves remain on earth today!

Issue 1

July - September 2005

Dear readers ,

Welcome to the first issue of the EWCP newsletter, which is going to reach you every three months from now on! I hope that you will enjoy it and that it will inspire you to understand the Bale Mountains National Park, its fauna, flora and the need for its conservation. This newsletter is mainly intended to make you aware of the critically endangered Ethiopian Wolf and the work of EWCP. Your collaboration to save these beautiful animals is needed.

I provide frequent environmental education in schools and homes. In addition to that distribution of educational materials including such newsletters is believed to contribute very significant to the education of children at school. Your newsletter has different columns for you to participate in contests letters and some actions for you to do at the school or home. Top participants and winners of the competitions will be given an award by the programme.

Your comments and suggestions play a vital role for the improvement of our next publication so please feel free to write us about what you feel or make a personal contact at the museum.

Thank you and good-bye for now

Zegeye

EWCP - P. O. Box 215 Bale, Robe



The wolf day

Every year since 1999 the wolf day is celebrated at the wolf day pitch. This year six schools Garamba, Dima, Gofingira, Heersho, Abakara, Dinsho primary and secondary schools and four local clubs namely the wolf club, the high school club, the Bird nature club and Abdiboru took part in sporting events. The games were male football and girls' volleyball.

There was a horse race for closing. More than 2500 people from Dinsho and surrounding villages have enjoyed the all day long event in the beautiful weather. Dinsho primary school and Gofingira were champions in both games while the wolf club took the clubs lead. Prizes for the winners of the games and raffle were given at the end of the day.



EWCP News

The vet team

The EWCP vet team has visited 10 villages and two towns in Adaba and Sinana Dinsho woreda to vaccinate dogs against rabies and distemper. According to Leta Edea, the vet officer the team has vaccinated more than 2000 dogs since April 2005. Dogs

are vaccinated so that they will not pass fatal disease especially rabies to the wolves. "The people are lucky. Dogs are vaccinated because of the wolves but eradication of the deadly disease such as rabies secure the survival of not only the wolves but also the community themselves and their livestock." said Leta indicating the advantages of vaccination.



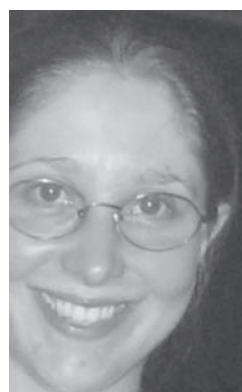
Leta vaccinating dog pup in and around BMNP

Following the track of the wolves

Late breaking news this year 35 pups of the critically endangered Ethiopian wolves have survived in BMNP, which is a good sign to these unique animals. According to Alo Hussein head of the monitoring team "these new pups are from four different sites which are central Sanneti, east Morebawa, Web valley and Tato" The team is pleased to have all these pups surviving so are we!



New born pups are the only hope for the survival of any species



is also evidence that reproductive success is higher in low-density populations, for example in the Web Valley following the rabies outbreak in the early 1990s. I will

on their vegetation. Prey and vegetation data will be combined with a Bale-wide habitat map created from satellite imagery, which encompasses the whole range of

This edition's guest is Lucy Tallents. Lucy is an English girl who has been studying the Ethiopian wolf in Bale Mountains National Park for the past three years she will earn her doctorate from Oxford University in England.

Guest speakers

Spatial Resource Partitioning and Reproductive Success in Ethiopian Wolves, Canis simensis

The broad aim of my research is to investigate habitat quality and resource distribution in the afro-alpine zone of the Bale Mountains, and its impact on patterns of social grouping and breeding in the Ethiopian wolf *Canis simensis*. My study site, the Bale Mountains in southern Ethiopia, holds the largest population of Ethiopian wolves, more than 300 animals, and my research focuses on three sub-populations: the Web Valley, Sanetti Plateau and Morebawa.

Wolf density in the Bale mountains is positively correlated with the density of their main prey - day-active rodents such as the giant molerat and grass rats. This indicates that the availability of resources limits wolf population sizes. There

test whether the reproductive success of a pack, measured by emergence litter size, pup survival rates and number of offspring recruited to the pack at one year of age, are correlated with variation in prey abundance through space and time. I will also investigate the relationship between habitat quality, territory configurations and wolf population structure. The rabies epidemic in 2003-4 resulted in a catastrophic decline in the Web Valley to one third of pre-rabies numbers. My research takes advantage of this 'natural experiment' to contrast wolf territoriality and breeding success in the same area at radically differing densities.

I am measuring prey density by trapping rodents, and surveying for non-burrowing prey using line-transects. I am also measuring vegetation at each trapping/transect location to develop a model for predicting prey abundance over entire wolf territories based

afro-alpine vegetation, from reedbeds and perennial water bodies to *Alchemilla* meadows and molerat-dense mima mounds which can be practically devoid of vegetation.

Having finished my final field surveys last month, my team and I are currently entering data into the computer and preparing for the major analytical phase of my research. My last surveys were focused on checking the accuracy of my habitat map, and surveying molerat activity in areas and habitats which I had not visited before, including the beautiful Worgona Valley and swamp-laced Chafa Delacha. My next major task is to pull all of the prey, vegetation and remotely-sensed data together to create the Bale-wide map of resource abundance which will form the backbone of my thesis. I will be returning to England in August, and will be very sad to say farewell to the staff of the EWCP, and the wolves which they aim to protect.

COMPETITION

Search for these words (lion, warthog, Ethiopian wolf, Caracal, leopard EWCP Nyala BMNP)

B	U	Z	Q	U	F	T	C	H	Y	G
R	O	P	C	L	I	O	N	S	W	M
Y	E	W	U	V	N	X	C	R	L	D
X	T	C	P	S	M	S	Z	U	E	B
V	H	F	U	Q	G	O	T	M	O	E
B	I	M	N	T	F	R	W	T	P	L
W	O	C	A	R	A	C	A	L	A	M
N	P	M	G	F	E	Y	D	S	R	T
C	I	P	T	S	Z	E	G	E	D	U
D	A	G	M	T	E	W	C	P	E	R
B	N	B	M	N	P	U	D	M	F	F
M	W	A	R	T	H	O	G	Q	P	D
R	O	E	T	H	L	E	O	M	N	M
E	L	N	Y	A	L	A	K	O	M	U
S	F	B	R	W	N	G	I	R	L	T

Do it now!

Most of the time our areas are not clean enough. If you look around there are rubbish such as plastics, so tell your family that it spoils our environment and kill our animals if they eat it. Collect it and burry it in a hole. Tell us what you did.

Seensa

Biyyyi keenya Itoophiyaan aadaa, seenaa fi qabeenya uumamaatiin addunyaa irratti ni beekamti. Kanneen tuqaman keessaa immo irra caalaatti qabeenya uumamaa kan ta'an hanbaa lubbu qabeeyyii bineensota bosonaa biyya keenya malee eessattuu hin argamne waan qabduuf xiyyeef-

fannaa guddaa dhaabilee kunuunsaa fi eegumsa qabeenya uumaa fi bineensota bosonaa irraa argatee jirti.

Kunuunsi bosonaa fi bineensota marartuu kanniinii paarkilee sagal fi iddoo eegumsa addaa (sanctuary) Itoophiyaa keessatti addeemsifamaa jira. Paarkiilee jiran keessaa tokkoo kan ta'e Paarkii gaarreen Baalee ti.

Jeedala fardaa (Ethiopian wolf)

Bineensota marartuu ta'an keessaa tokko kan ta'e jeedala fardaati. Jeedalli fardaa akka biyyaattitti gaarreen Kaabaa, Shawaa, Walloo Arsii fi Baaletti yammuu argaman lakkoofsi isaanii walii galatti 450 gad ta'uun isaanii harma hoosiftoota ardii irraa badaa jiran keessaa tokkoffaa dhaan addunyaan galmee diimaa irraatti galmeessaa jira. Harki walakkaan isaanii kan argamu immoo Baalee keessatti.

Lakkoofsi jeedala fardaa haala rifachiisaan akkanatti xiqqaachoof sababii adda addaa tu jira.

- Dhukkuba saree maraatte
- Iddoo jireenyaa dhabuu
- Sareen walitti dhalchuu fa'a

Qo'annaan akka mul'isutti Bara 1991/2 GC tti jeedaloota Fardaa Baalee harka 70% dhukkuba sareetu ajjeese. Bara 1996 EC Ji'oota jalqaba waggaa keessatti jeedaloonna fardaa 40 ol ta'an dhukkuba kanaan du'anii jiru.

Rakkina kana salphisuu fi bineensota kana badii irraa ittisuuf eegumsa addaa barbaachisaa ta'uu isaa mootummaan biyyaattii fi dhaabileen adunyaa dhimmi kun ilaalu itti amanuun Dhaaba BORN FREE FOUNDATION jhamuu fi kan biyya Ingiliizitti argamuun qarqaramaa sagantaan eegumsa jeedala fardaa (Ethiopian wolf conservation programme) paarkii gaarreen Baalee keessatti hundaa'uun sochii kunuunsaa ciminaan erga eegalee waggoota lakkoofsisee jira.

Paarkii gaarreen Baalee

Paarkiin gaarreen Baalee Paarkii wwan bu'aa guddaa qaban ardii Afrikaa keessatti argaman keessaa isa tokko. Bara 1962 tti yammuu dhaabbatu Kaayoon bu'uurfama paarkii kanaatiif inni guddaan bineensota marartuu biyya keenya qofatti argaman Gadamsa badaa fi jeedala fardaa lakkoofsaan xiqqaachaa jiran qarqara badii irraa ittisu fi iddoo jireenya isaanii

kununsanii tursiisuun qabeenya boonsaa kana dhaloota dhufuuf dabarsuu dha.

Haalli jireenya bineensota marartuu kanniinii immoo biyyatti keessaa gadamsi baddaa harki 75% fi jeedalli fardaa harki 50% ol kan ta'an paarkii gaarreen Baalee keessatti argamuun isaa Baalee adunyaa irratti beeksisuu danda'ee jira.

Sochii ijoo saganitichaa

1. Talaallii saree
2. Sagantaa duula barnootaa
3. Kolaa fi opireeshina saree
4. Too'annaa jiruu jeedaloota fardaa (monitoring & Patrolling)
5. Qo'annaa fi qorannaa (research)
6. Oddeeffannoo (data) sassaabuu
7. Turizimii cimsuu dha.

Kana malees dalagaan sagantichaa

bineensotaaf qofa kan bu'aa buuse osoo hin taane qabeenya uummata naannoo kan ta'an beeladoota heddu dhukkuba sareetiif saaxilamanfi lubbuu namootaas du'a irraa oolchaa jira. Akkasumas piroojaktiin kun carraa hojii uummata naannootiif kan bane ta'uun bu'aa guddaa hangana hin jedhamne buusaa jira. Dalagaan sagantichaatis haaluma wal fakkaateen itti fufa!

Teessoon:
EWCP

P. O. Box 215 Bale, Robe Ethiopia
E-mail: ewcp@zoo.ox.ac.uk



**SAGANTAA EEGUMSA JEEBALA FARDA
ETHIOPIAN WOLF CONSERVATION PROGRAMME**

