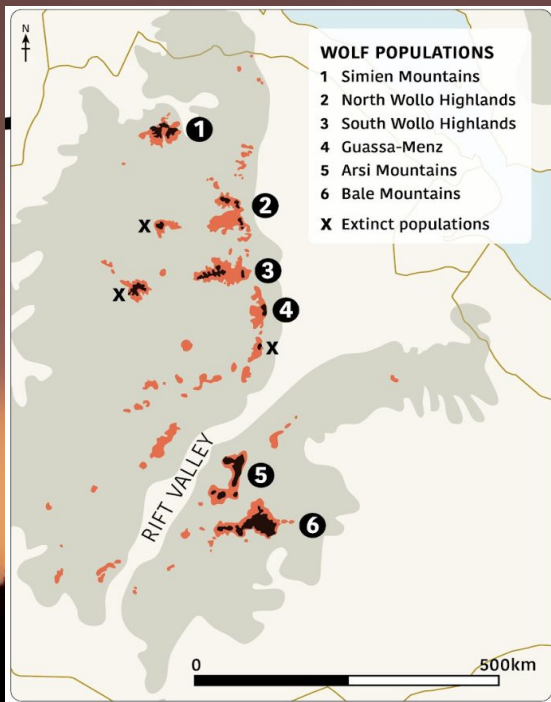


CONSERVATION TRANSLOCATIONS



Map of current and extinct Ethiopian wolf populations throughout the country

Conservation Translocations are the next frontier for Ethiopian wolf recovery. Decades of EWCP research reveals where genetic diversity endures, when populations collapse, and how quickly they rebound when protected. Guided by science and the National Action Plan, our vision is to connect and restore populations through carefully-planned translocations. Biobanking and pioneering stem cell tools will compliment this ambitious plan.

SUPPORT THIS PROJECT TO:

- Build national and local support for translocations
- Map Afroalpine biodiversity to guide translocations decisions
- Launch first translocations to boost declining wolf populations
- Launch first reintroduction to historical suitable range
- Establish stem cells biobanking programme

Donate
to EWCP:



ethiopianwolf.org

***30 years of conserving Ethiopian wolves:
help us build resilience for the next decade***